

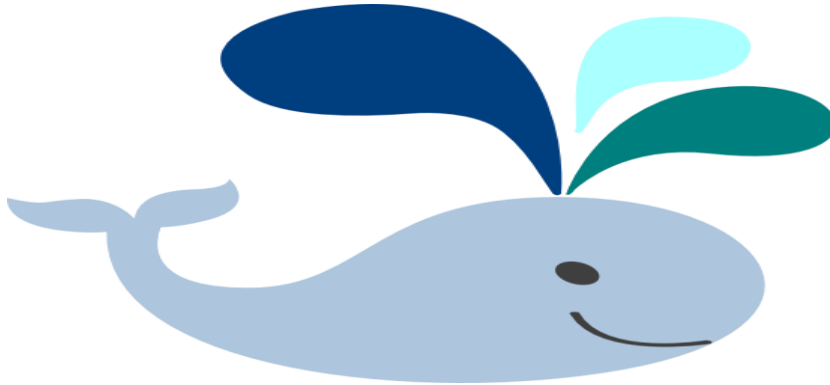
**SRI KANCHI MAHASWAMI VIDYA MANDIR
WATER**

CLASS : I

TASK : 1

Read the passage and answer the following questions

WHALLY THE WHALE



Whally is big blue whale. It lives in ocean. He swims with his whale friends. Sometimes Whally swims deep then jumps high into the air. When he lands in the water, Whally makes a huge splash.

1. What kind of an animal is Whally?

2. What is the colour of Whally?

3. Where does he live?

4. Who does Whally swim with?

5. What does Whally do after deep dive?

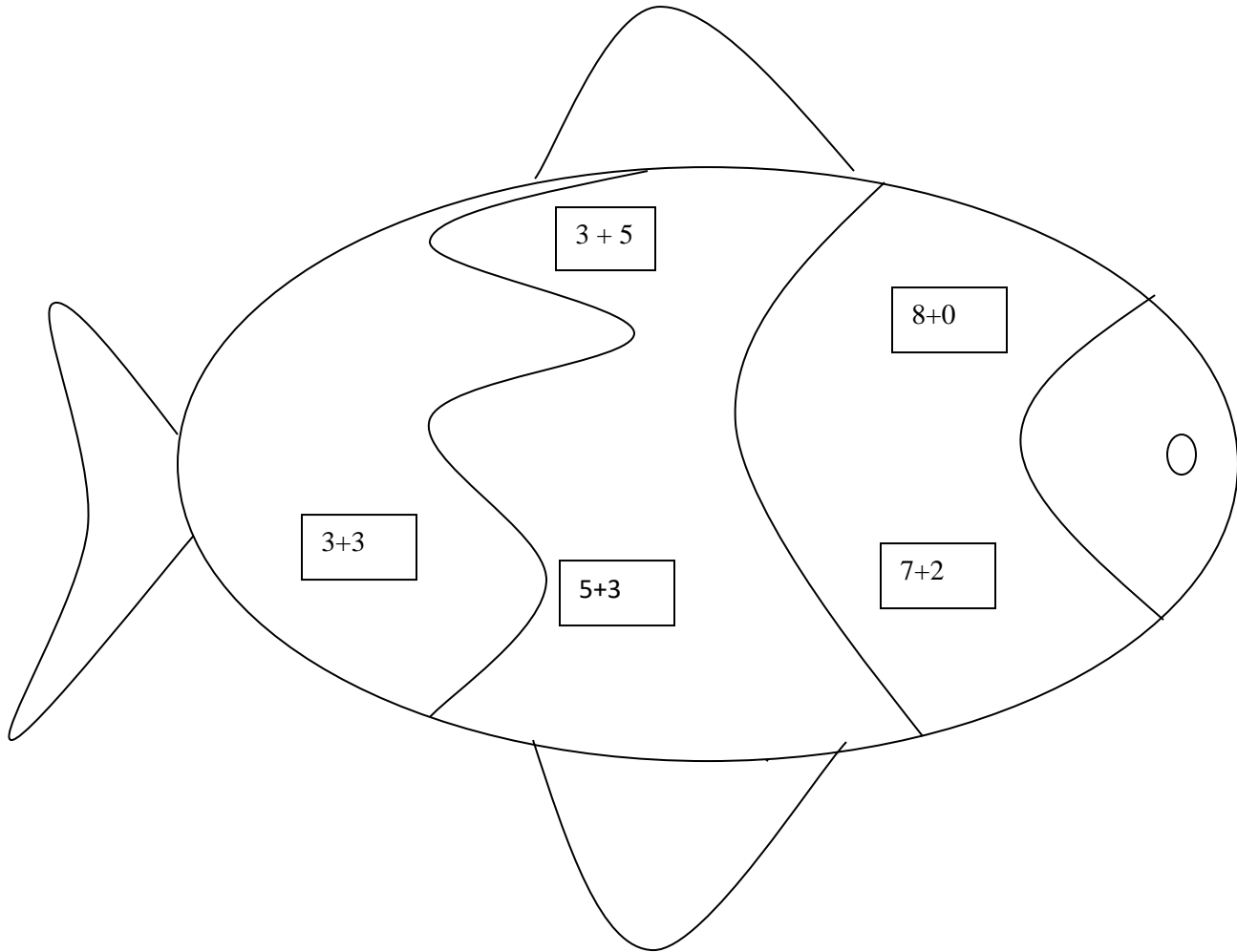
6. What happens when Whally lands in the water?

**SRI KANCHI MAHASWAMI VIDYA MANDIR
WATER**

CLASS : I

TASK : 2

Solve the simple addition and colour blue if the sum is equal to “8” and remaining “colour red”.
Fill water to the fish tank.



ஸ்ரீ காஞ்சி மஹாஸ்வாமி வித்யா மந்திர்
வகுப்பு: I செயல்திட்டம்: 3

தலைப்பு: தண்ணீர்

கீழே கொடுக்கப்பட்டுள்ள படத்தைப் பார்த்து செயல்களை எழுதுக.

1.



2.



3.



4.

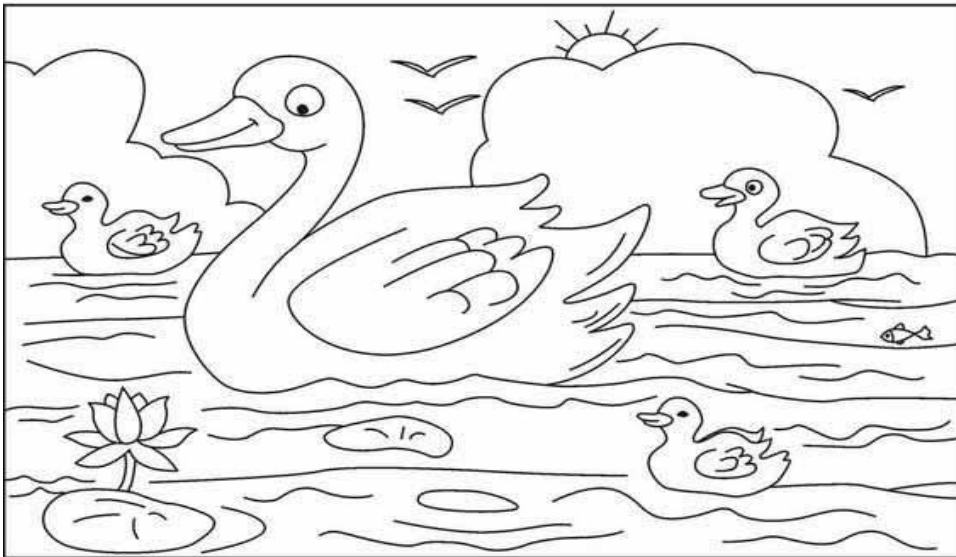
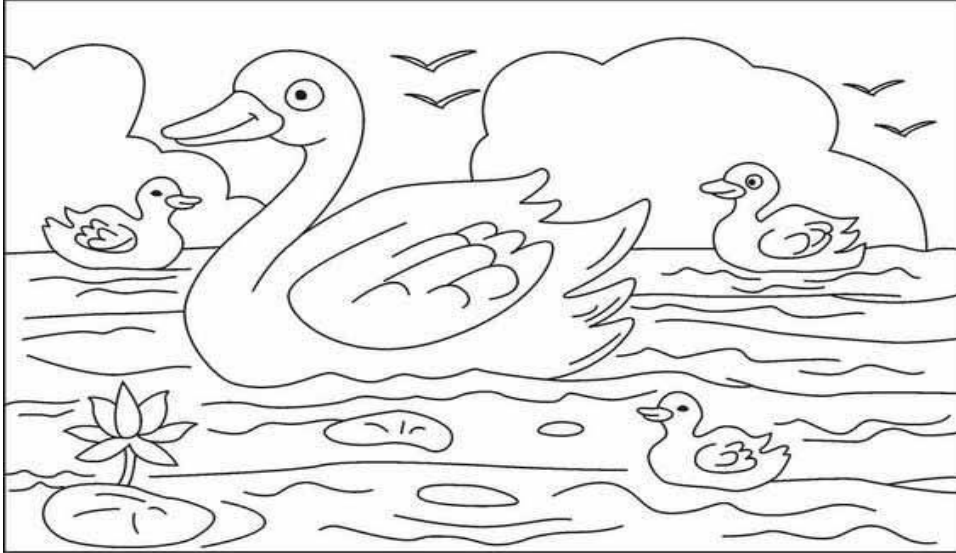


SRI KANCHI MAHASWAMI VIDYA MANDIR
WATER

CLASS : I

TASK : 4

दिए गए चित्रों में 7 अंतर ढूँढिए। (spot 7 differences in the given picture)



SRI KANCHI MAHASWAMI VIDYA MANDIR WATER

CLASS : I

TASK : 5

Write "YES" for the activity we need water and "NO" for the other boxes

